

*Soprano; Instrument and Voice
MezzoSoprano; Instrument and Voice
Alto; Instrument and Voice
Tenor; Instrument and Voice
Baritone; Instrument and Voice
bas; Instrument and Voice*

*--- C clef on 1st line
--- C clef on 2nd line
--- C clef on 3rd line
--- C clef on 4th line
--- C clef on 5th line
--- F clef on 4th line*

SHEET

Typesetting output with LilyPond

POEM

Road 13

*MUSICAL INSTRUMENT
and*

MIXED CHORUS GROUP

The dynamic of performance is freedom(the conductor's) discretion.

In This Dark Road

North wind runs and blows away
In the light of the moon
While the fallen leaves make a sound
Be emptying the path of the wind

Blink of the stars
I have been walking for 76 years already
Be Comforting for me
Heals the breath of life

Be saying the same too us
But still live!
A silent living brilliance in silence
Lights until it disappears

end.

In This Dark Road

ees major; c d ees f g aes bes

Baritone; C clef on 5th line (& Solo; singer).

soprano; C clef on 1st line, alto; C clef on 3rd line.

bass; F clef on 4th line, tenor; C clef on 4th line.

Op.104; Road 13

Yukio Yoshida

Baritone Sol; Voice Words

First)

*North wind runs and blows away
In the light of the moon
While the fallen leaves make a sound
Be emptying the path of the wind*

Second)

*Blink of the stars
I have been walking for 76 years already
Be Comforting for me
Heals the breath of life*

third)

*Be saying the same too us
But still live!
A silent living brilliance in silence
Lights until it disappears*

soprano

alto

tenor

baritone
Solo; singer

bass

3

North wind runs and blows away In the light of the moon While the

5

fallen leaves make a sound Be emp - tying the path of the wind

7

Blink of the stars I've been walking for sev - en - ty sev - en years al - ready

10

Be con - soling for me Heals the breath of life

14

18

Be saying the same But still live! A si - lent liv - ing bril - liance

20

in si - lence Lights un - til it dis - ap - pears. n

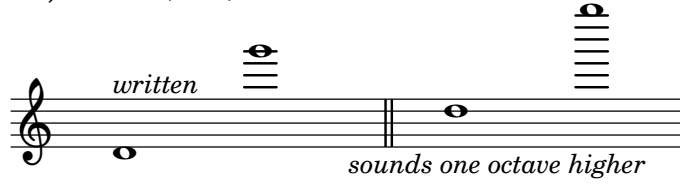
About location (longa) and (breve)
 Please, Breath of longa and breve do in the members alternating (But, like Don't stand out).

At location , Always, please look at the conductor(or baton).

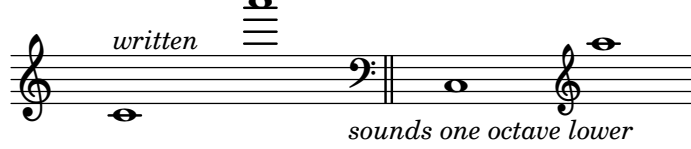
INSTRUMENT RANGES

About; Some of Instruments; there is a difference between writing-note and real-note. for instance:

WOODWINDS; Piccolo(in C) -- like this --



Bass Flute -- like this --



Stage Position; *(This arrangement--with the instrument needles column below--)*

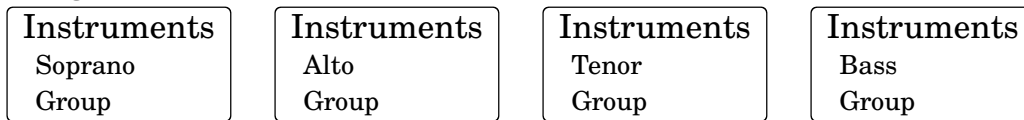
About the Chorus; *(For instsnce)*

Bass
Tenor
Alto
Soprano

since, They must be reverse for Instrument's arrangement

About Position of Sololist is placed freely(on the stage)

About Instrument arrangement; *(must be reverse for Chours's position)*



Conductor

..... Audience seats

If you can do it, please running on;

As it is the lighting of the audience's Seats(Do not turn off even when the play began). *When play began, lighting the stage (rather than the audience's) more brightly.*

ALL

SOURCE
CODE

As all; See! (HTML) @menu

<https://www.sheet-poem.com/poem/html/2019/2.24.0/road-13/road-13.html>