

Where-IT!

POEM

Where is it !

F major; c d e f g a bes

soprano; C clef on 1st line, alto; C clef on 3rd line.

bass; F clef on 4th line, tenor; C clef on 4th line.

Yukio Yoshida

Op.99 1/21/2018

Voice Words(S,A,T,B)

(Don't Song; But it's pronunciation)

First.

People who have left.

People who will soon come.

How long will it last?

What is this universe?

Second.

I can not see the future

To a dark long tunnel

Lead this questioner. And here,

There is no light of God

Third.

And Now, What the universe created

In the law of the universe

It appears and flows away

Sound and appearance (S.B.)

Fourth.

People going and leaving on the street. (A.T.)

Life pattern in your chest

Breathe in, breath out

The sun sets, the sun rises

soprano

Voice; sop

alto

Voice; alt

tenor

Voice; ten

bass

Voice; bas

3

People who have left. People who will soon come. How long will it last?

Peo-ple who have left. Peo-ple who will soon come. How long will it

Peo-ple who have left. Peo-ple who will soon come. How long will it

People who have left. People who will soon come. How long will it last?

6

What is this universe? I can't see the fu - ture, To a dark long tun -- nel.

last? What is this universe? I can't see the fu - ture, To a dark long tun -- nel.

last? What is this universe? I can't see the fu - ture, To a dark long tun -- nel.

What is this universe? I can't see the fu - ture, To a dark long tun -- nel.

10

Lead this que - stion - er. And here,

Lead this que - stion - er. And here,

Lead this questioner. And here,

Lead this questioner. And here,

14

There is no light of God. And Now, What the uni - verse cre - ated

There is no light of God. And Now, What the uni - verse cre - ated

There is no light of God. And Now, What the uni - verse cre - ated

There is no light of God. And Now, What the uni - verse cre - ated

18

In the law of the uni - verse. It appears and flows away,

In the law of the uni - verse. It appears and flows away,

In the law of the uni - verse. It appears and flows away,

In the law of the uni - verse. It appears and flows away,

22

Sound and ap - pear - ance.

Sound and ap - pear - ance.

27

Peo-ple going and leaving on the street,

Peo-ple going and leaving on the street,

32

m. Life pat - tern in your chest

m. Life pat - tern in your chest

m. Life pat - tern in your chest

m. Life pat - tern in your chest

m. Life pat - tern in your chest

36



m. Breathe in, breath out. The sun sets, the sun rises. The sun sets, the sun rises.

m. Breathe in, breath out. The sun sets, the sun rises. The sun sets, the sun rises.

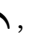
m. Breathe in, breath out. The sun sets, the sun rises. The sun sets, the sun rises.

m. Breathe in, breath out. The sun sets, the sun rises. The sun sets, the sun rises.

m. Breathe in, breath out. The sun sets, the sun rises. The sun sets, the sun rises.

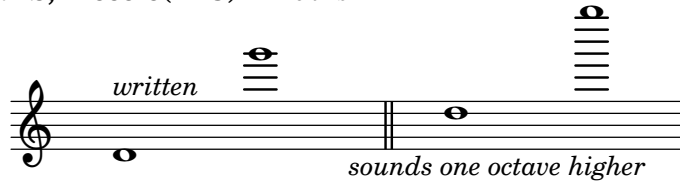
About location  (longa) and  (breve)

Please, Breath of longa and breve do in the members alternating (But, like Don't stand out).

At location , *Always, please look at the conductor(or baton).*

INSTRUMENT RANGES

About; Some of Instruments; there is a difference between writing-note and real-note. for instance:
WOODWINDS; Piccolo(in C) -- like this --



Bass Flute -- like this --



Stage Position; *(This arrangement--with the instrument needles column below--)*

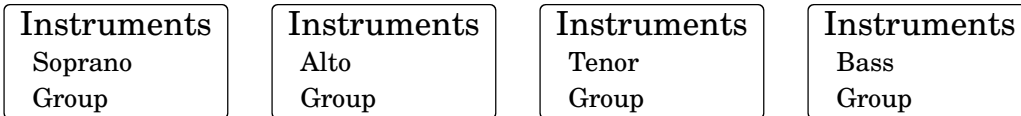
About the Chorus; *(For instsnce)*

Bass **Tenor** **Alto** **Soprano**

since, They must be reverse for Instrument's arrangement

About Position of Sololist is placed freely(on the stage)

About Instrument arrangement; *(must be reverse for Chours's position)*



Conductor

..... Audience seats

If you can do it, please running on;

As it is the lighting of the audience's Seats(Do not turn off even when the play began). *When play began, lighting the stage (rather than the audience's) more brightly.*

ALL

SOURCE
CODE

As all; See! (HTML) @menu

<https://www.sheet-poem.com/poem/html/2018/2.24.0/where-it/where-it.html>